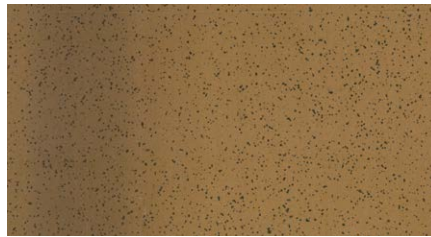


| | |
|-------------------------|---|
| Designation | Topcover Tile Marselha. |
| Description | Insulating roofing panel with the shape of a traditional tile, composed of two profiled metal sheets joined by an insulating core of rigid polyurethane (PUR) or polyisocyanurate (PIR) foam. The exterior panel has a textured paint finish for a greater resemblance to traditional tiles. In harsher environments, it is recommended to apply silicone to the panel joint to prevent condensation. |
| Application | Building roofs with a minimum slope of 10%. |
| Dimensions* | Thicknesses: 40-60-80 mm ± 2 mm Width: 1000 mm ± 2 mm Length: 2,10 – 14,00 m, in multiples of 0,35 m Maximum recommended length: 8,05 m |
| Metallic support | Galvanized steel sheet S250GD: EN 10142 Thicknesses: 0,4-0,5-0,6 mm |
| Insulated core | Polyurethane (PUR) Polysocyanurate (PIR) Thermal conductivity: <u>PUR</u> : 0,0207 W/m °C <u>PIR</u> : 0,0207 W/m °C Density: 40 kg/m ³ Reaction to fire: <u>PUR</u> : B-s2,d0 <u>PIR</u> : B-s2,d0 <u>PIR-HI</u> : B-s1,d0 |
| Coating | Standard: Polyester textured paint 25 µm. Special: Granite HDX 55 µm Textured color Naive Wood for the interior face. Possibility of metallic coating in lacquered aluminium. |

*Tolerances according to EN 14509
 W/m K = W/m °C | W/m² K = W/m² °C

Color range

All RAL references presented here, have a textured finish.

Exterior side**RAL 8004T** Copper brown**RAL 8023T** Orange brown**RAL 9005T** Jet black**Alvero****Interior side****RAL 9010** Pure white**Naive Wood** Textured lacquer**Patinao** Spanish roof